

Price includes standard floorplan with S1 facade.



FIRST HOME BUYERS PRICE \$619,455 ^

FIXED PRICE HOUSE & LAND

VIVA 2-16

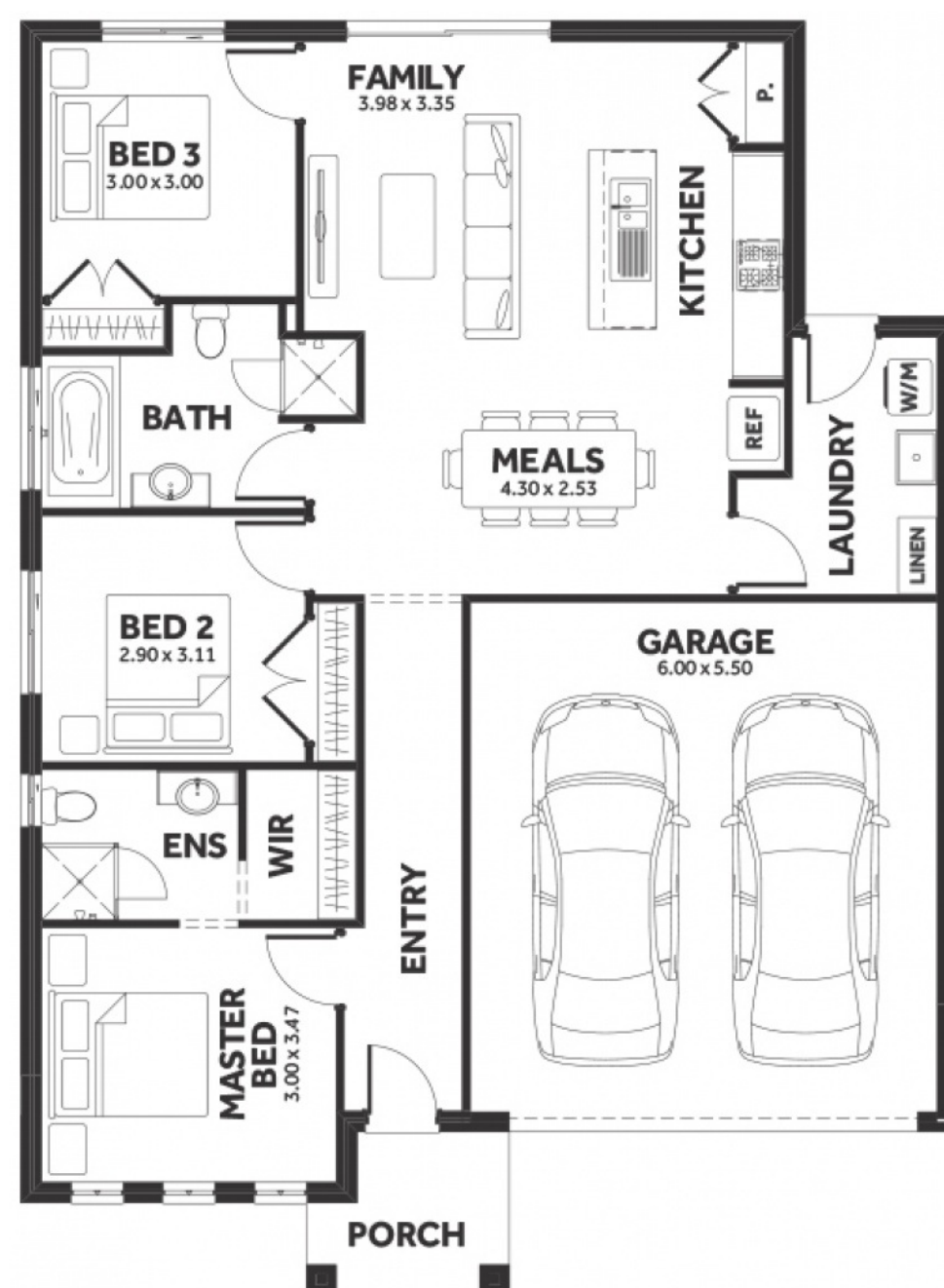
Lot 7635, Hatfield Street
LAND SIZE: 347.00m²

Harpley

3 2.0 2

145.29m² | 15.64 sqs

- ✓ Council and Developer Requirements
- ✓ 25 Year Structural Guarantee
- ✓ \$888 Deposit
- ✓ Stone bench tops & overhead cupboards to the kitchen
- ✓ 900mm appliances & dishwasher to the kitchen
- ✓ Tiled Shower Bases
- ✓ Choice of tiles or timber look laminate flooring
- ✓ Driveway & Garage door remotes
- ✓ Double glazed windows



Please Contact

Tony Cursaro

0481 294 133

tonyc@8homes.com.au

We make it easy!