

Price includes standard floorplan with STANDARD-BUILD OVER STRUCTURE WITH UPGRADE MATERIALS facade.



Artist impression. Furniture, landscaping, driveway, window furnishing and porch decking is not provided by Urbanedge Homes.

FIRST HOME BUYER PRICE: **\$836,313** ^

Fixed Price House & Land

Jardene 2-31

Lot 3133, Brighton Avenue
LAND SIZE: 313.00m²

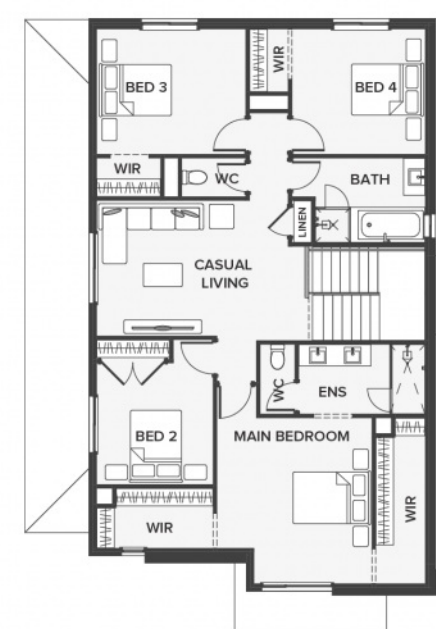
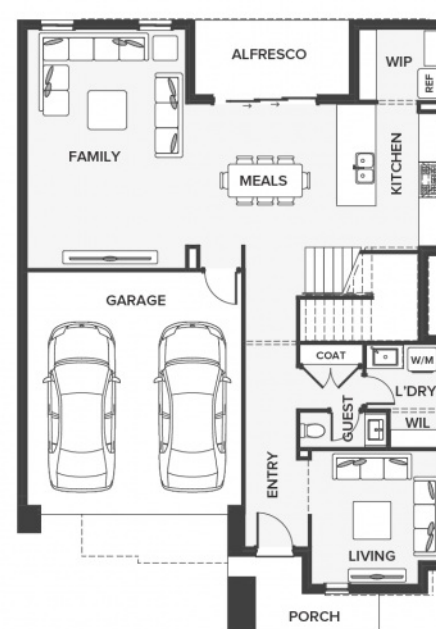
RATHDOWNE
WOLLERT



283.25m² | 30.49 sqs

- Architecturally inspired fully rendered facade
- Brickwork or rendered foam above all ground floor windows and sliding doors
- Ilve Appliances to Kitchen
- Floor coverings throughout
- Silestone benchtops to Kitchen and Ensuite(s) Bathroom
- Base Cabinetry to Laundry
- and much more ...

edge
inclusions



Please Contact
Rony Warda
0422 146 756
rony.warda@urbanedgehomes.com.au

Luxury **Redefined**
urbanedgehomes.com.au