

Price includes standard floorplan with S1 facade.

Furniture, feature lighting, landscaping, driveway, window furnishings, and porch decking not provided by Eight Homes.

FIRST HOME BUYERS PRICE \$789,852 ^

FIXED PRICE HOUSE & LAND

d FIVE

Lot 2040, Flint St Cornerstone

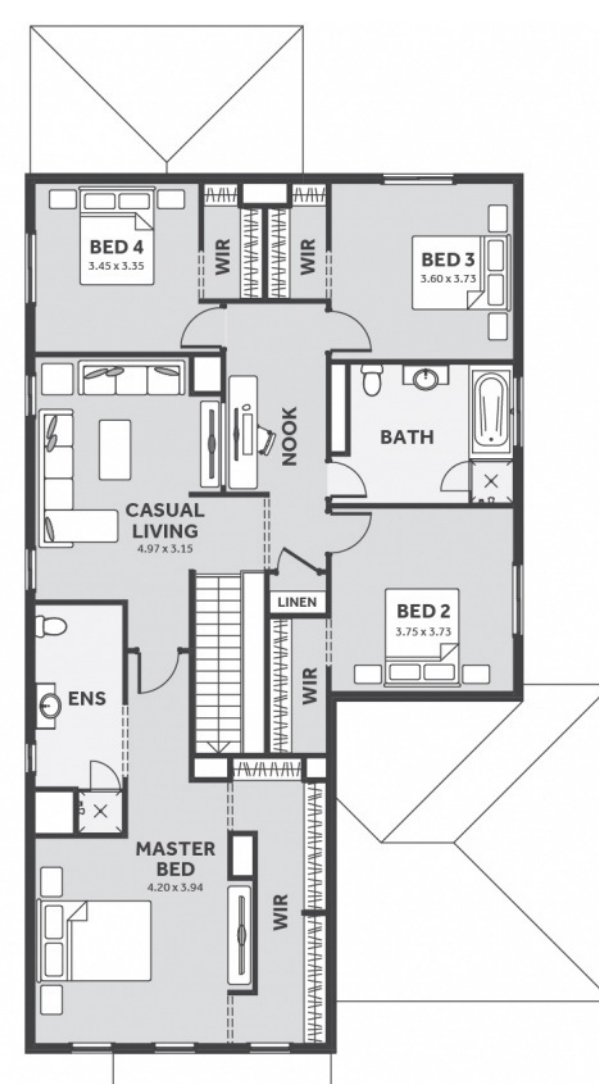
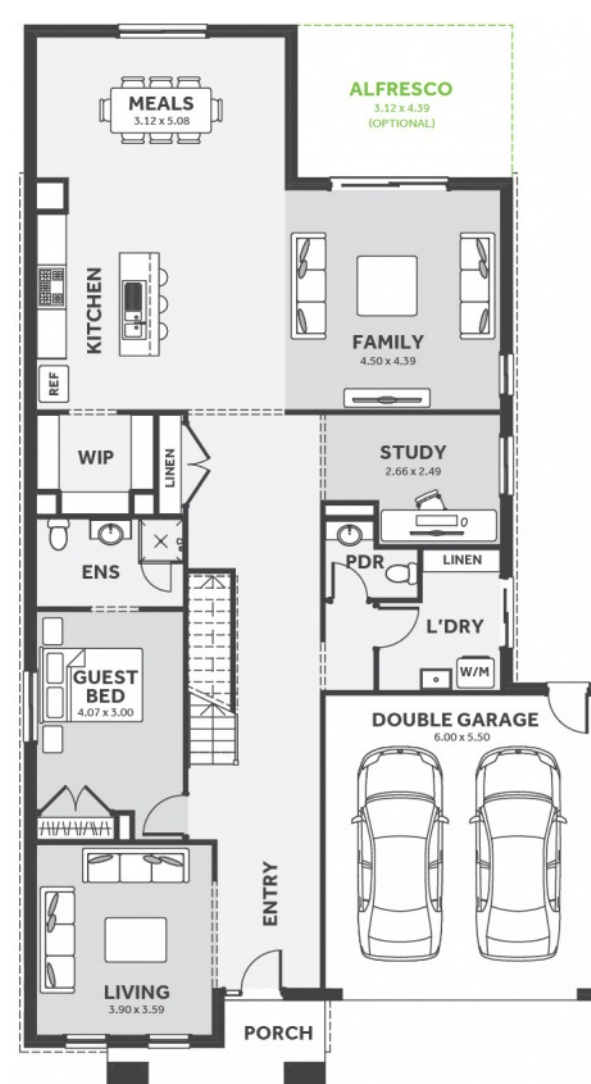
LAND SIZE: 392.00m²

CORNER
STONE
WERRIBEE

5 3.5 2

359.98m² | 38.75 sqs

- ✓ Council and Developer Requirements
- ✓ 25 Year Structural Guarantee
- ✓ \$888 Deposit
- ✓ Stone bench tops & overhead cupboards to the kitchen
- ✓ 900mm appliances & dishwasher to the kitchen
- ✓ Tiled Shower Bases
- ✓ Choice of tiles or timber look laminate flooring
- ✓ Driveway & Garage door remotes



Please Contact
Marisa Robbins
0409 173 264
marisar@8homes.com.au

We make it easy!