

Price includes standard floorplan with S1 facade.



Furniture, feature lighting, landscaping, driveway, window furnishings, and porch decking not provided by Eight Homes.

FIRST HOME BUYERS PRICE \$497,888

FIXED PRICE HOUSE & LAND

S TWO.1

Lot 1003, Plane Avenue

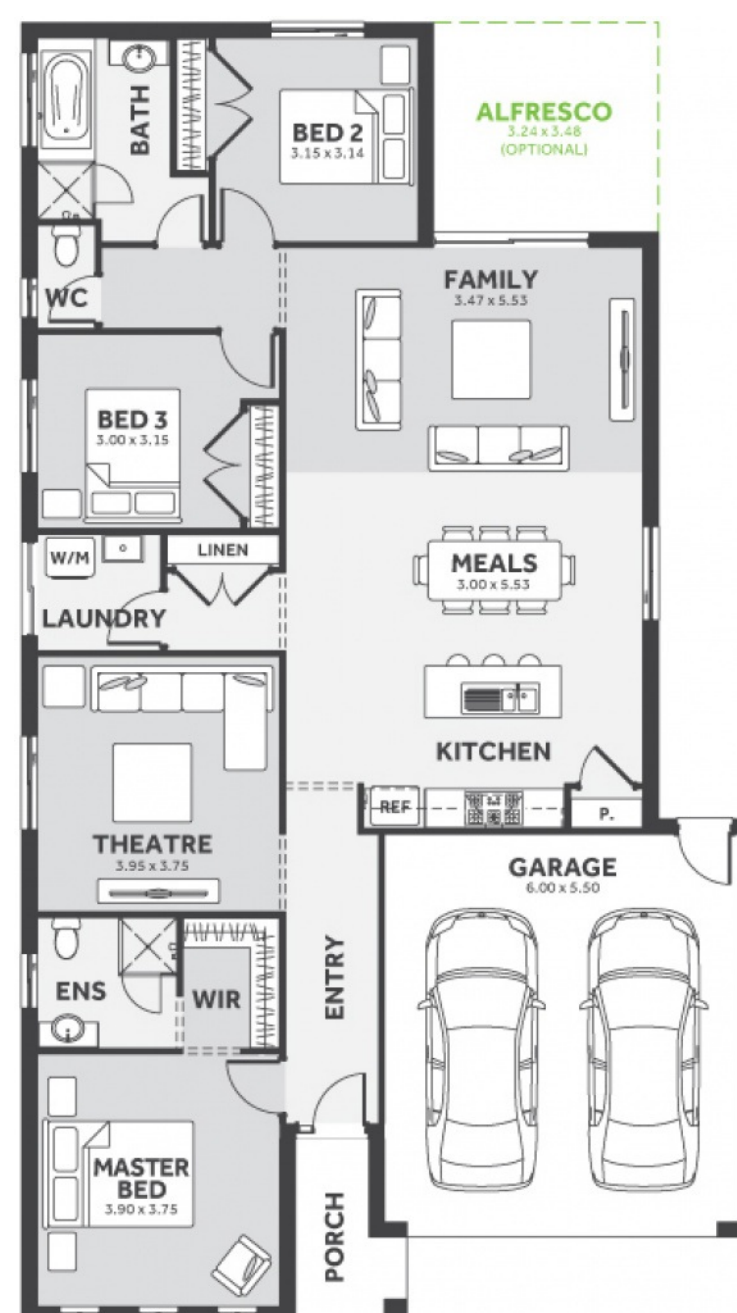
LAND SIZE: 350.00m²

Mambourin

3 2.0 2

191.28m² | 20.59 sqs

- ✓ Council and Developer Requirements
- ✓ 12 Month Price Freeze
- ✓ 25 Year Structural Guarantee
- ✓ \$888 Deposit
- ✓ Efficient and Simple
- ✓ Stone bench tops & 900mm appliances to Kitchen
- ✓ Stylish 8mm timber look laminate flooring
- ✓ Driveway



Please Contact
Billy Spaseski
0451 985 551
Billys@8homes.com.au

We make it easy!